

Λ Ν Ν Λ Μ Λ Ρ Ι Λ J O P Ξ K

**International  
Light  
Rider 2017**

### **1. STAGE:**

Stage minimum size: 10m x 8 m

### **2. Equipment**

All Equipment must be of a professional standard, well maintained and in good working order. All Moving Spots have to be equipped with the same gobos in the same direction.

### **3. Lighting Desk**

Lighting desk position to be 1/2 to 2/3 of the distance between the stage and back wall in the centre of the room. The desk has to be on an at least 20cm high riser and should ensure a free, unblocked view on the stage. The FOH riser for the lighting desk should be at least 2m wide.

We will need JANDS VISTA I3 lighting desk .

### **4. Multimedia**

Video projectors z minimum of 10000 ANSI covering 90% of the scene, The HDMI / VGA cable should be connected to the FOH

### **5. Scenography**

Scenographic elements (SOFTBOX and photographic background) provide with the band

SOFTBOX require an additional 10 dimmer channels and additional wires

It is necessary to provide independent support of the suspension of the photographic background according to the drawing (background dimensions 4m x 5 m high)

Both the floor and the back wall must be black (the back wall can be covered with a black curtain and floor covered with black carpet)

**For more information please contact :**

AMJ@artlightgroup.pl

Tomasz Sierotko

mob. +48 502 661 861

[www.ArtLightGroup.pl](http://www.ArtLightGroup.pl)

[www.facebook.com/ArtLightGroup](https://www.facebook.com/ArtLightGroup)



ANNA MARIA JOPEK

## Equipment

Quantity	Fixture	Manufacturer
12	Moving Spot MAC Qantum Profile	Martin
5	Alpha Profile 1500	Clay Paky
19	Moving LED Wash 800	Robe
4	Profile 25-50 degrees min. 700W	
2	HAZER smoke machine	
2	Video projector HD 10000 ANSI	
10	DIMER 1 kW /CH	

**For more information please contact :**

AMJ@artlightgroup.pl

Tomasz Sierotko

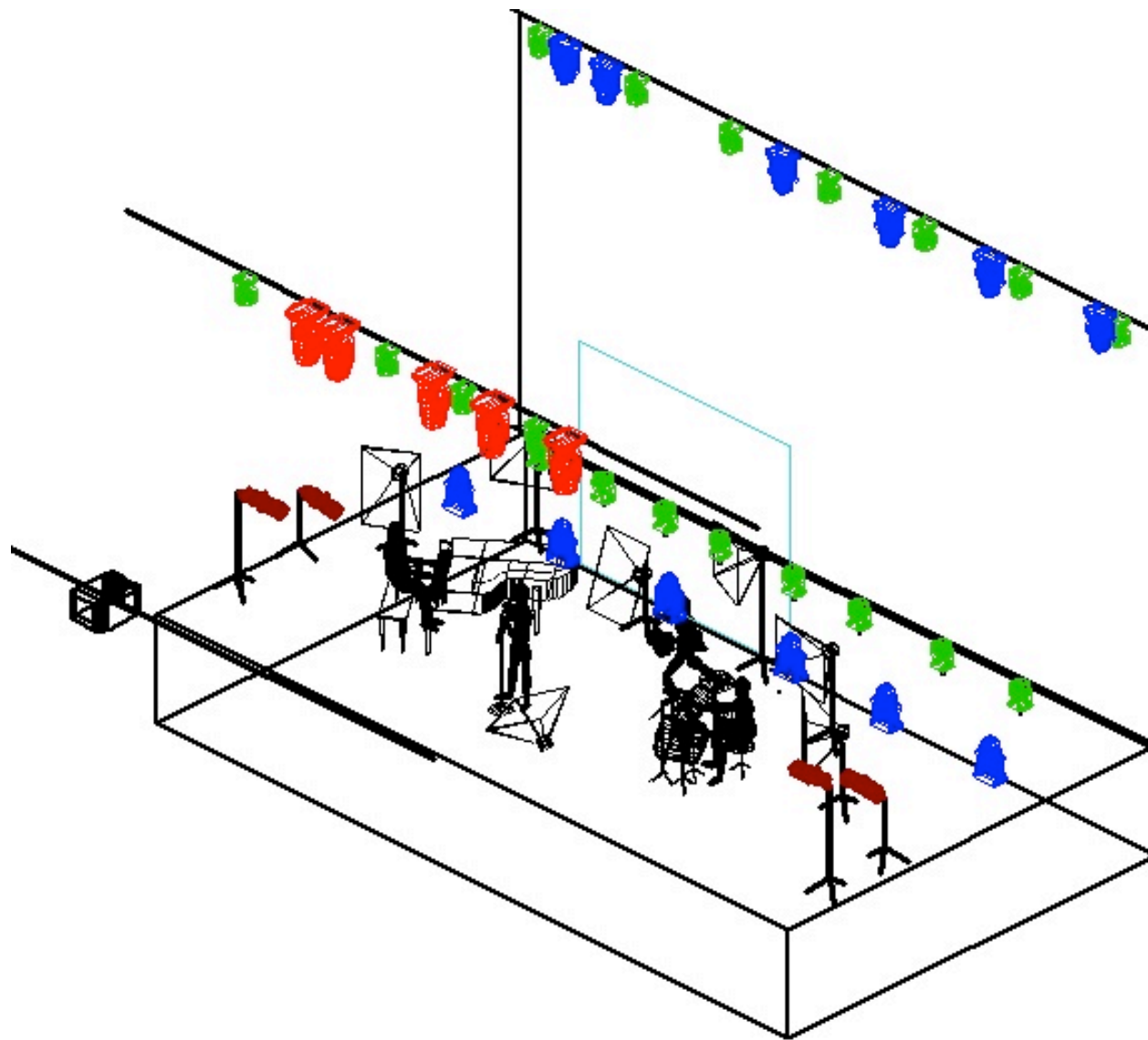
mob. +48 502 661 861

[www.ArtLightGroup.pl](http://www.ArtLightGroup.pl)

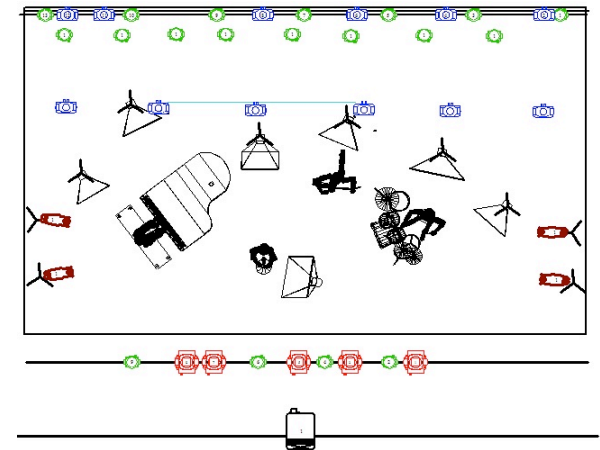
[www.facebook.com/ArtLightGroup](https://www.facebook.com/ArtLightGroup)



ANNA MARIA JOPEK



## Light Rider 2018



ALPHA PROFILE  
1500

MARTIN MAC  
QUANTUM

ROBIN 800  
LED WASH

PROFILE  
25-50 700W

VIDEO  
PROJECTOR  
10000 ANSI  
HD

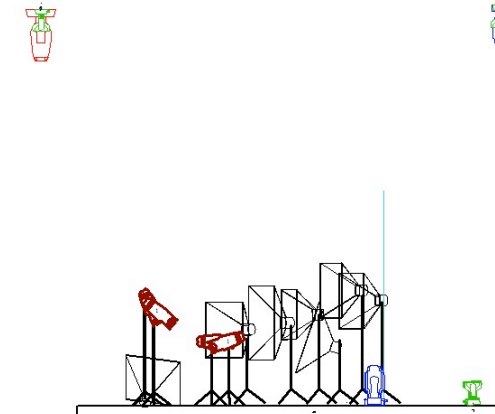
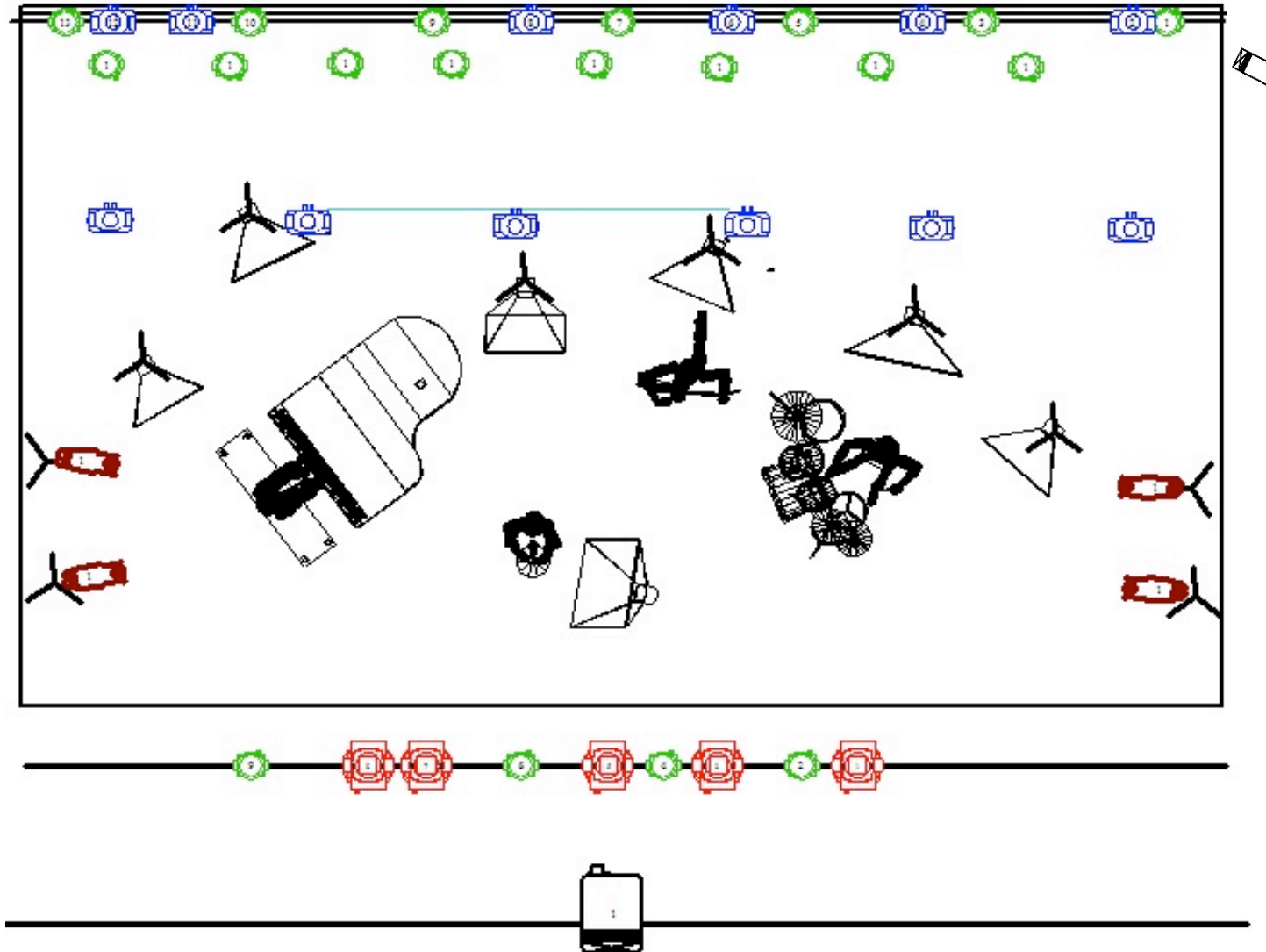
For more information please contact  
[biuro@artlightgroup.pl](mailto:biuro@artlightgroup.pl)  
Tomasz mob. +48 502 661 861



**ART LIGHT GROUP**  
[www.ArtLightGroup.pl](http://www.ArtLightGroup.pl)

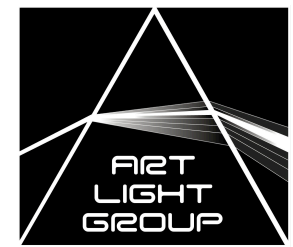
ANNA MARIA JOPEK

Light Rider 2018



-  ALPHA PROFILE 1500
-  MARTIN MAC QUANTUM
-  ROBIN 800 LED WASH
-  PROFILE 25-50 700W
-  VIDEO PROJECTOR 10000 ANSI HD

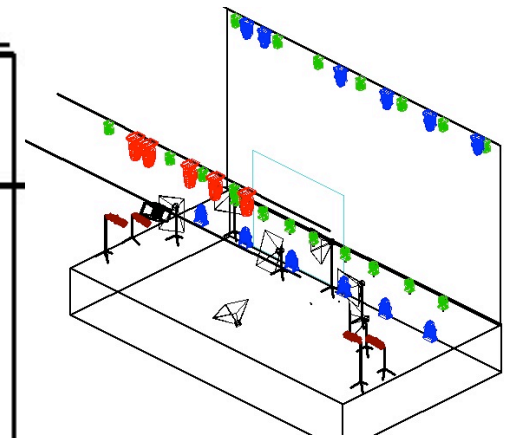
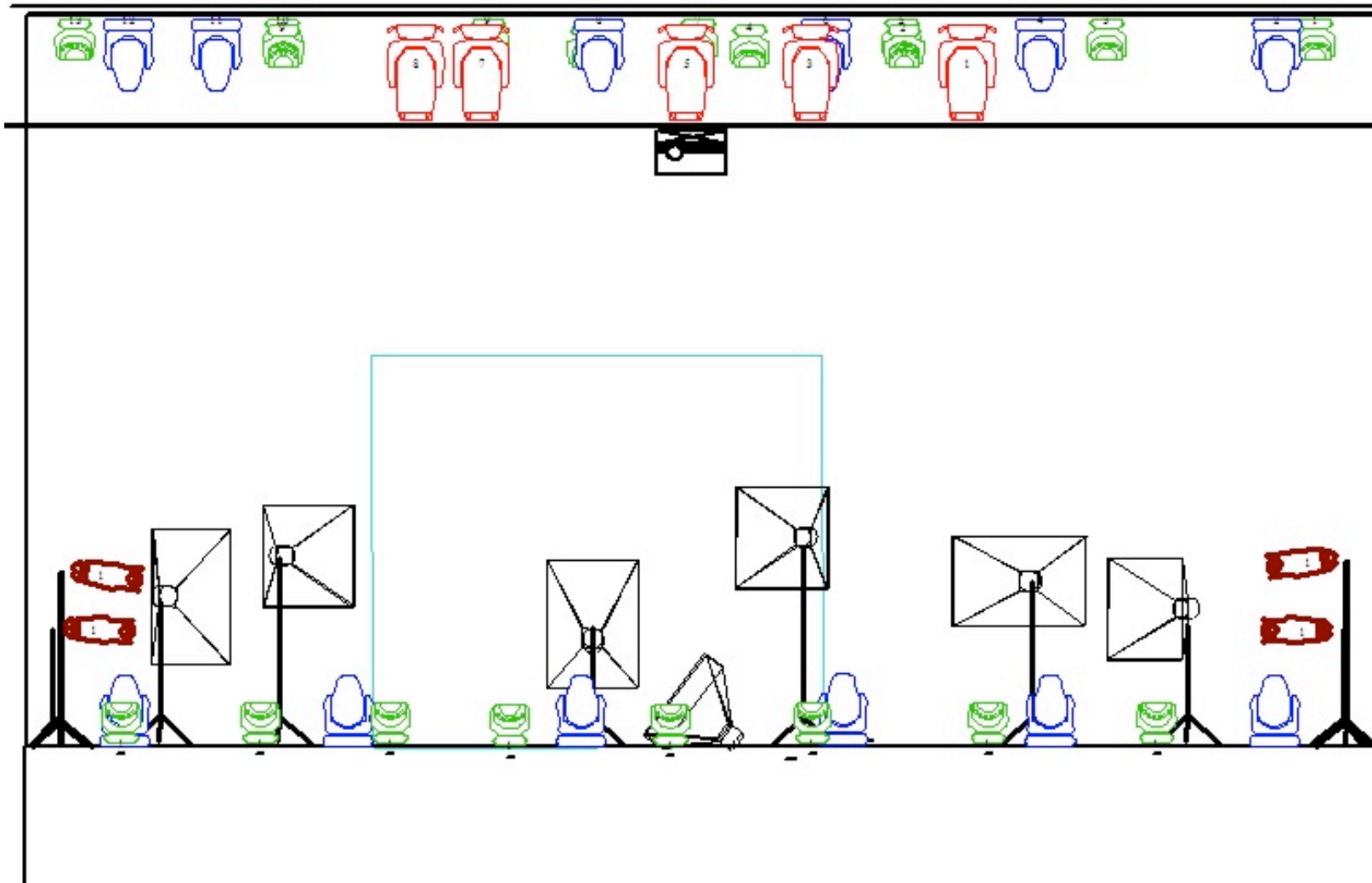
For more information please contact  
[biuro@artlightgroup.pl](mailto:biuro@artlightgroup.pl)  
Tomasz mob. +48 502 661 861



**ART LIGHT GROUP**  
[www.ArtLightGroup.pl](http://www.ArtLightGroup.pl)

ANNA MARIA JOPEK

Light Rider 2018



-  ALPHA PROFILE 1500
-  MARTIN MAC QUANTUM
-  ROBIN 800 LED WASH
-  PROFILE 25-50 700W
-  VIDEO PROJECTOR 10000 ANSI HD

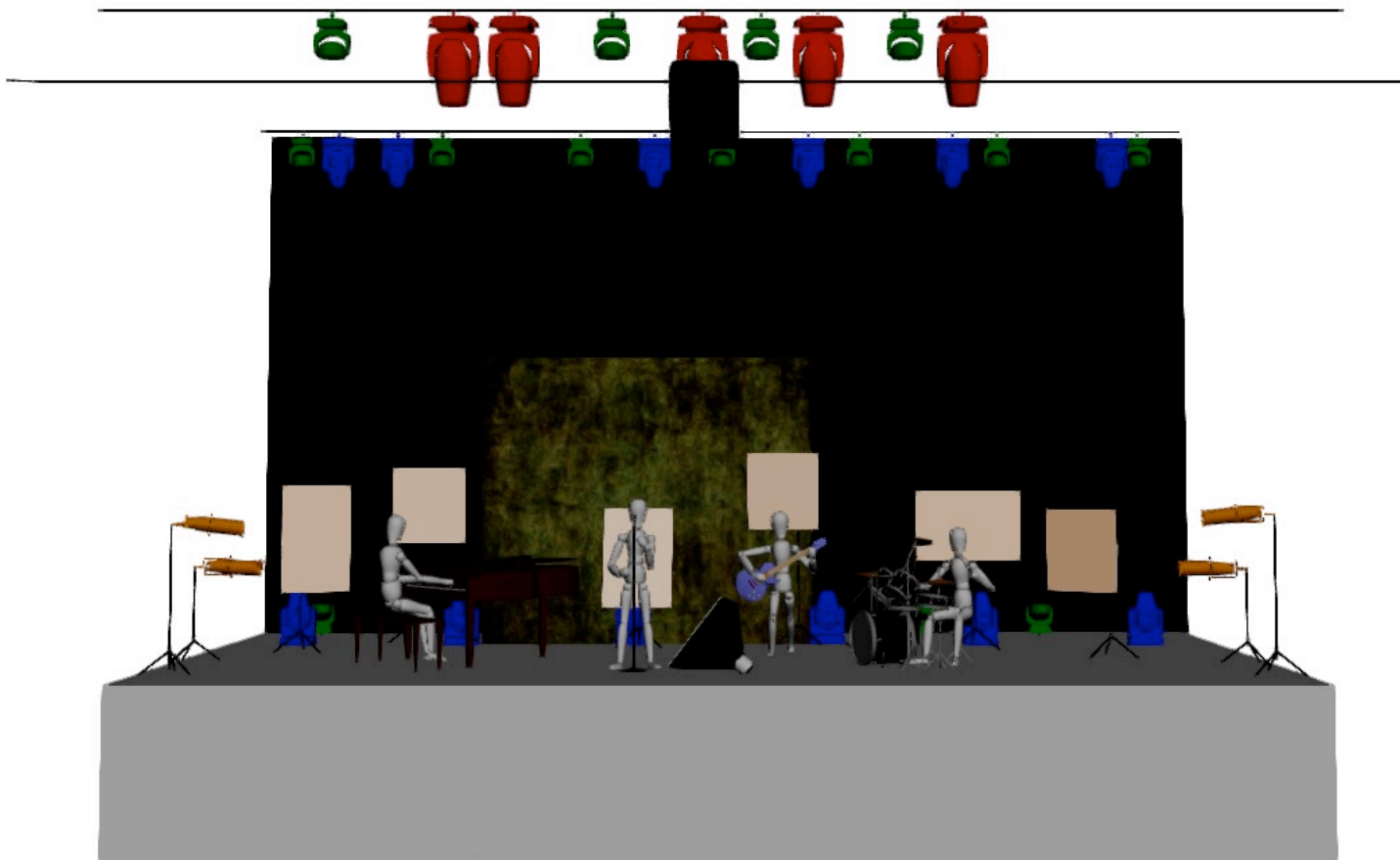
For more information please contact  
[biuro@artlightgroup.pl](mailto:biuro@artlightgroup.pl)  
Tomasz mob. +48 502 661 861

**ART LIGHT GROUP**  
[www.ArtLightGroup.pl](http://www.ArtLightGroup.pl)



# ANNA MARIA JOPEK

## Light Rider 2018



ALPHA PROFILE  
1500



MARTIN MAC  
QUANTUM



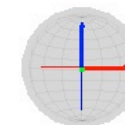
ROBIN 800  
LED WASH



PROFILE  
25-50 700W



VIDEO  
PROJECTOR  
10000 ANSI  
HD



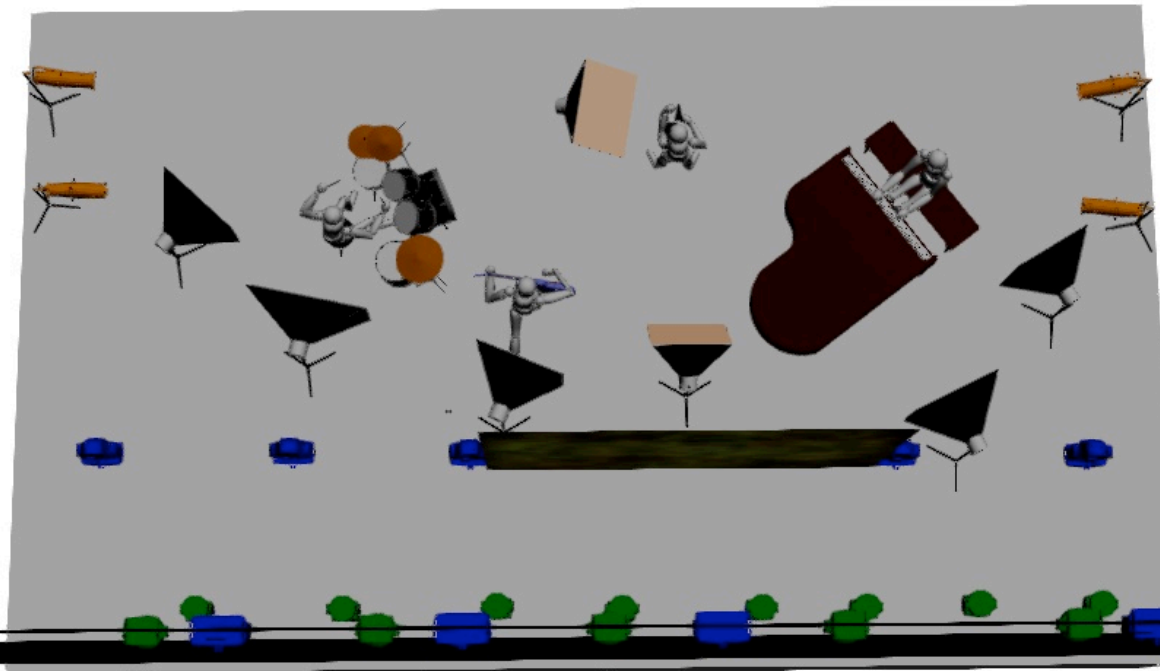
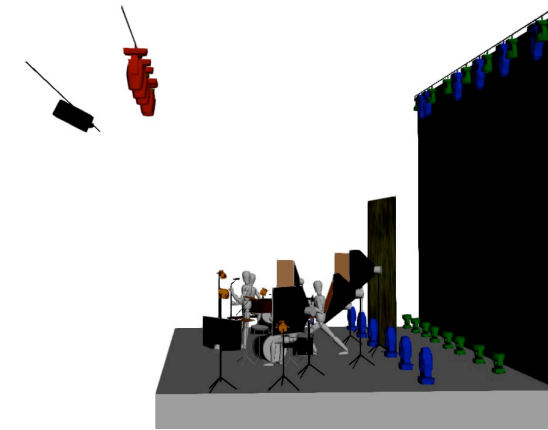
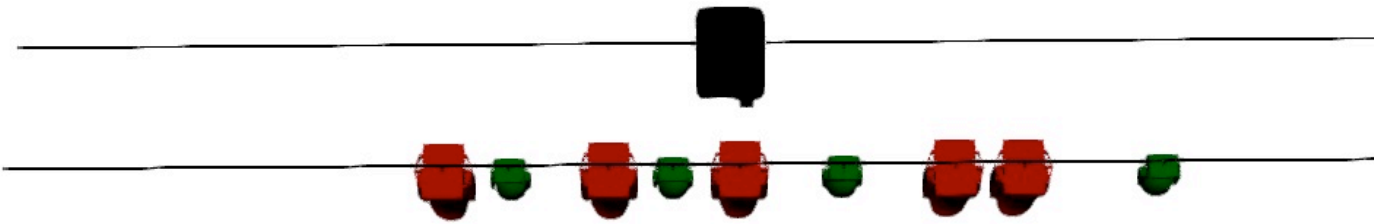
For more information please contact  
[biuro@artlightgroup.pl](mailto:biuro@artlightgroup.pl)  
Tomasz mob. +48 502 661 861

**ART LIGHT GROUP**  
[www.ArtLightGroup.pl](http://www.ArtLightGroup.pl)



ANNA MARIA JOPEK

Light Rider 2018



ALPHA PROFILE  
1500



MARTIN MAC  
QUANTUM



ROBIN 800  
LED WASH



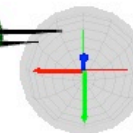
PROFILE  
25-50 700W



VIDEO  
PROJECTOR  
10000 ANSI  
HD



For more information please contact  
[biuro@artlightgroup.pl](mailto:biuro@artlightgroup.pl)  
Tomasz mob. +48 502 661 861



**ART LIGHT GROUP**  
[www.ArtLightGroup.pl](http://www.ArtLightGroup.pl)

